



*sewing patterns*  
BY PATTY YOUNG



# paw stocking

17.5" h x 10.5" w  
(excluding hanging loop)

A FREE PATTERN BY PATTY YOUNG/MODKID

# PAW STOCKING

by Patty Young for MODKID, LLC  
www.modkidboutique.com

## Supplies:

- Sewing Machine
- 1/2 yard of fabric #1 or 1/3 yard of non directional fabric (we used **Textured Basics** collection, by Patty Young)
- 1/4 yard of fabric #2 for the cuff (we used **Textured Basics** collection, by Patty Young)
- 1/3 yard of fusible fleece
- OPTIONAL: Small scraps of white felt and fusible web for the paw print, but we used the left-over pieces of fusible fleece for our sample and it worked out really well because it is thicker and more opaque than felt.
- Coordinating thread
- Five (5) ornamentations for stocking (i.e. jingle bells, pom-poms, beads)
- Sewing pins, fabric scissors, paper scissors and tape
- Tracing Paper and tracing wheel (or water-soluble fabric marker)

## Prepare Pattern Pieces:

- Print all pattern pieces at 100% (no scaling).
- Cut **Pattern Pieces A1 through A4** on the outer solid line (including the shaded areas). Overlap the shaded areas as indicated on the pattern pieces and tape together to form your lower "paw" pattern piece. This will be referred to as **Pattern Piece A** going forward.
- Cut **Pattern Piece B** along the outer solid lines only (do NOT cut along the diagonal dashed lines).

## Cut the Fabric Pieces:

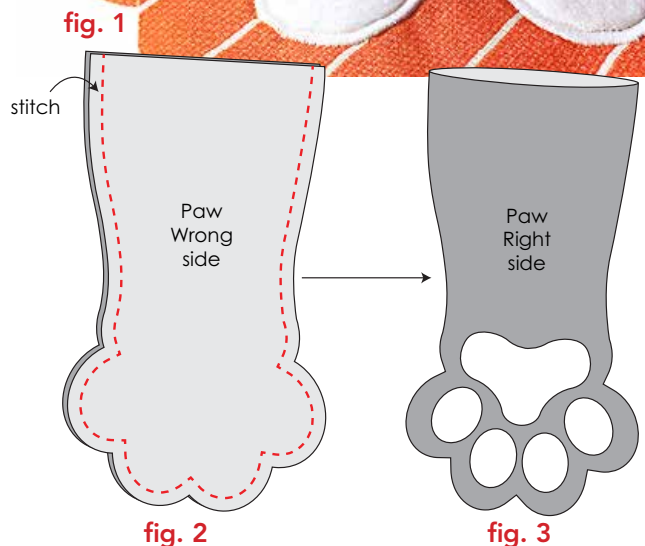
- **Pattern Piece A (Paw):** Cut two (2) mirrored of fabric #1 and two (2) mirrored of fusible fleece.
- **Pattern Piece B (Cuff):** Cut four (4) of fabric #2, trace dashed lines onto the wrong side of 2 of these pieces only.
- **Hanging Loop (no pattern piece):** Cut one (1) 1.5" wide x 8" long piece
- **Paw Print:** Cut one (1) out of fusible fleece (recommended) or felt and fusible web, as desired.

## Assemble:

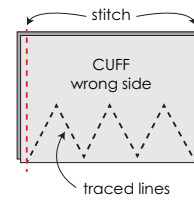
1. Fuse fleece to the wrong side of each **Paw (Pattern Piece A)**. Quilt your Paw as desired.

Using the dashed lines on Pattern Piece A as a template, place the fleece or felt **Paw Print (Pattern Piece C)** pieces on one side of the Paw, where indicated, and fuse them in place with a hot iron. With a tight zig-zag stitch or satin stitch, sew around the perimeter of each Paw Print piece to secure them in place, **fig. 1**.

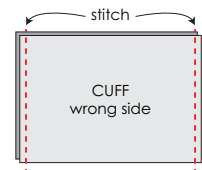
2. Place the finished Paws right sides together and pin, aligning all raw edges. Stitch with a 1/2" seam allowance (along the outer dashed line) all around the Paw, leaving the top open, **fig. 2**. Stitch slowly and carefully around all the paw curves, lifting the presser foot and pivoting at each point. Trim the seam allowance down to a 1/4" and clip into all curves. Turn the Sock right side out and use a blunt tool to push the rounded "toes" out and smooth out the curves, **fig. 3**. Press around all edges.



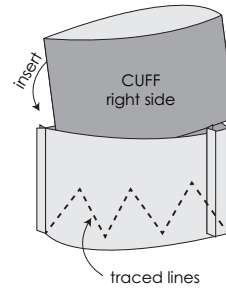
3. Place the two rectangular **Cuff (Pattern Piece B)** pieces with the traced lines, right sides together and stitch along the short sides with a 1/2" seam allowance, **fig. 4**. Do the same with the remaining Cuff pieces, **fig. 5**. Press seams open. Turn the untraced Cuff piece right side out. Place inside the traced Cuff piece with right sides together, **fig. 6**, and pin along the raw edges, aligning the side seams. Baste 1/8" along the bottom raw edge to keep these pieces from shifting. You will now be sewing along the lines you traced from the pattern piece. Trim off the excess fabric below the stitched lines, leaving about a 1/8" seam allowance, **fig. 7**. Clip into each top peak as close as you can without snipping through your stitches and clip each bottom point. Turn Cuff right side out and push out each point with a blunt tool. Press entire Cuff well. Topstitch 1/8" along points.



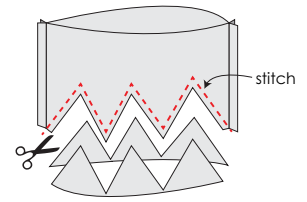
**fig. 4**



**fig. 5**



**fig. 6**

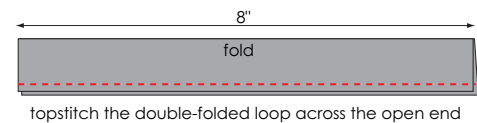


**fig. 7**

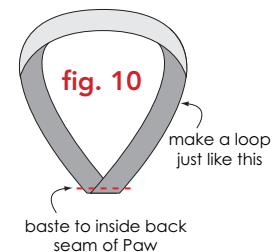
4. Fold the **Hanging Loop** in the same manner as bias tape. To do this, fold the loop in half lengthwise, wrong sides together. Open back up and press each raw edge in toward the center using the first fold as a guide, **fig. 8**. Fold entire piece in half encasing the raw edges. Topstitch along the open edge 1/8", **fig. 9**. Fold Hanging Loop in half, as shown in **fig. 10**.



**fig. 8**

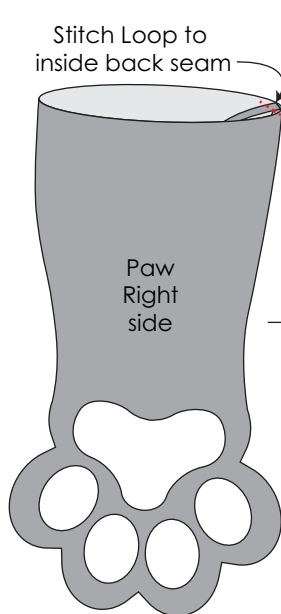


**fig. 9**

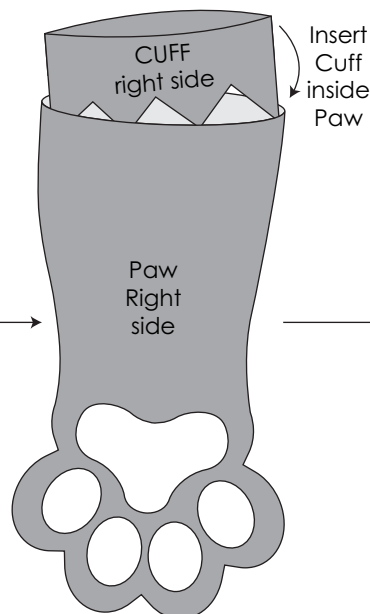


Pin and baste Loop to the inside back seam of the Paw, aligning raw edges at the back seam, **fig. 11**.

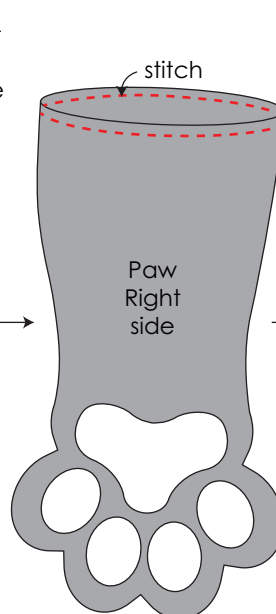
5. Insert Cuff inside the Paw with the right side of the Cuff facing the wrong side of the Paw and the Hanging Loop sandwiched in between, **fig. 12**. Aligning side seams and raw edges at the top, pin and stitch with a 1/2" seam allowance all around the opening, **fig. 13**. Trim seam allowance down to 1/4". Turn Cuff over to the right side of the Paw and slightly press around the opening, **fig. 14**. If desired, hand sew decorative ornamentation to each point of the Cuff. We added miniature jingle bells to our stocking.



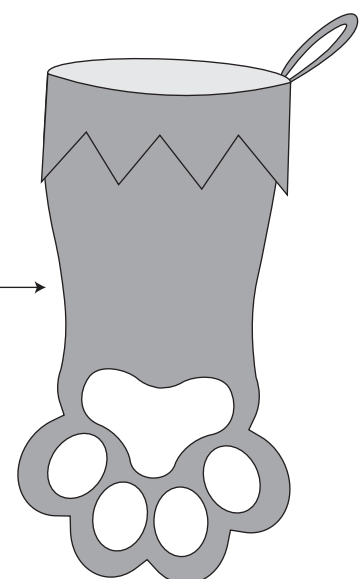
**fig. 11**



**fig. 12**



**fig. 13**



**fig. 14**



*sewing patterns*  
BY PATTY YOUNG

A1

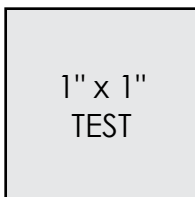
## PAW STOCKING

FRONT & BACK PAW  
cut 2 of fabric #1  
cut 2 of fusible fleece

1/2" SEAM ALLOWANCE  
INCLUDED

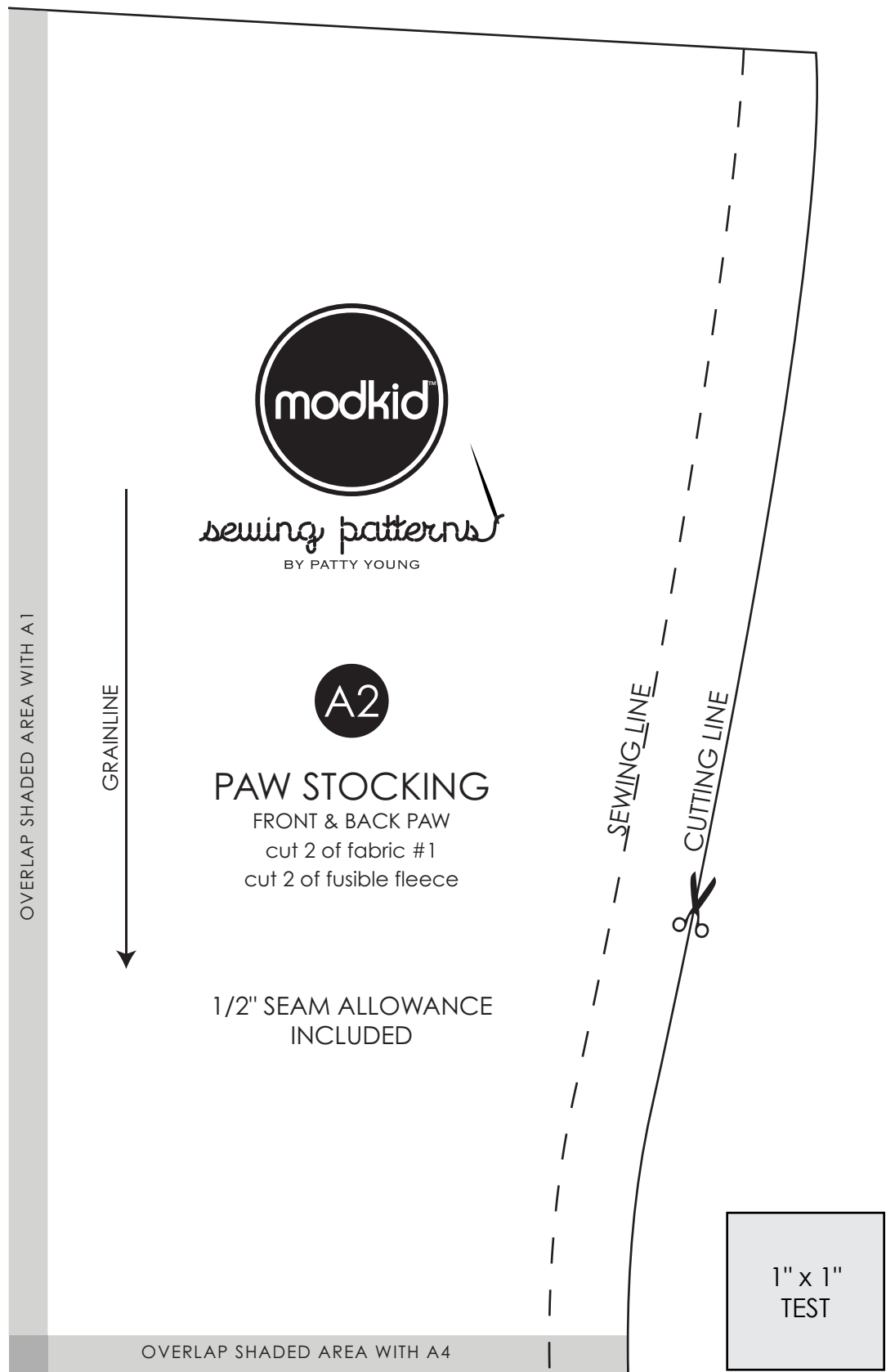
### NOTE:

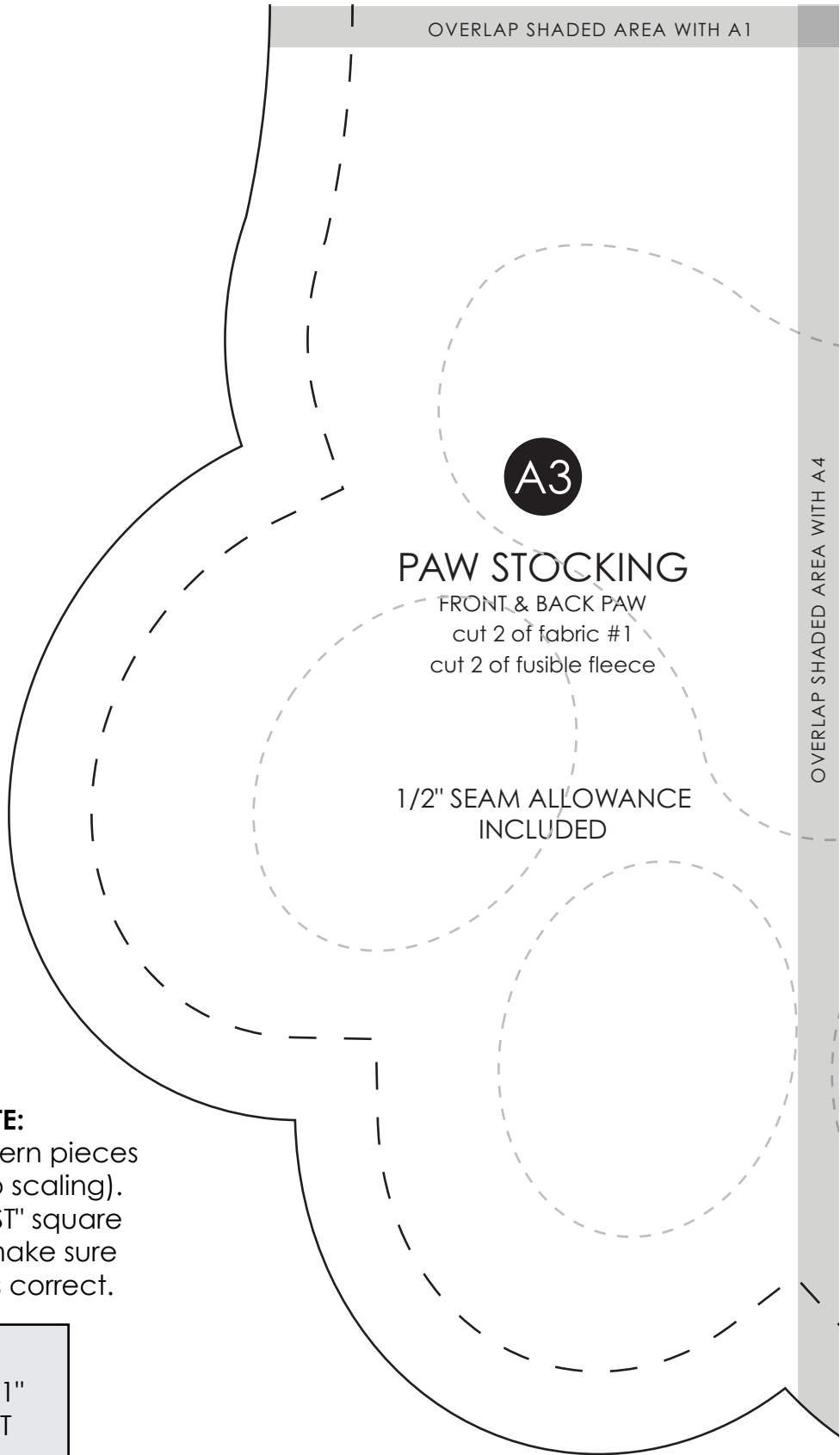
Print all pattern pieces  
at 100% (no scaling).  
Use the "TEST" square  
below to make sure  
the sizing is correct.



OVERLAP SHADED AREA WITH A2

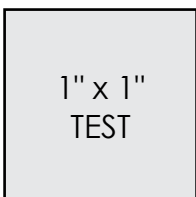
OVERLAP SHADED AREA WITH A3

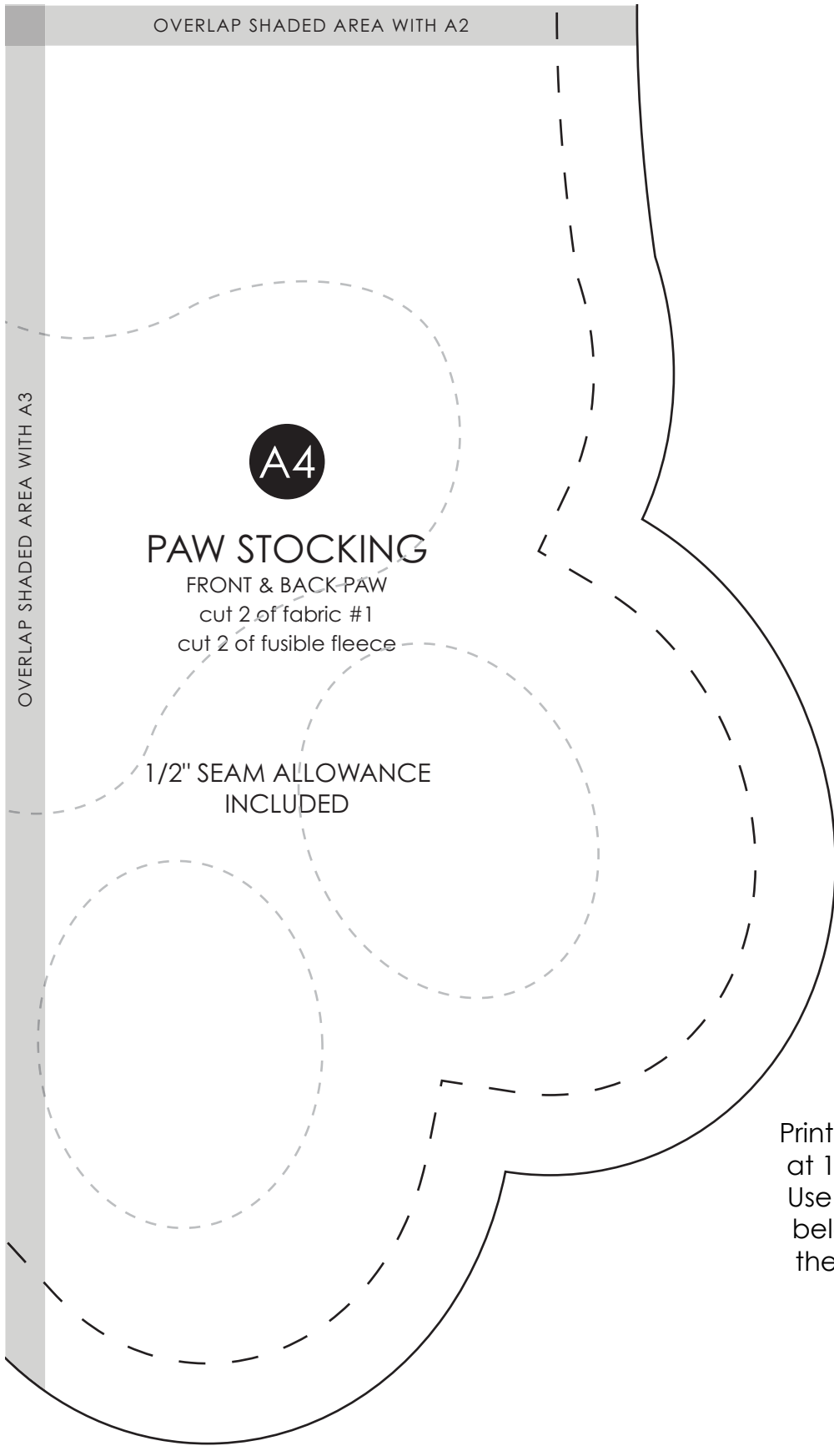




**NOTE:**

Print all pattern pieces at 100% (no scaling). Use the "TEST" square below to make sure the sizing is correct.





**NOTE:**  
Print all pattern pieces at 100% (no scaling). Use the "TEST" square below to make sure the sizing is correct.



TOP

**B**

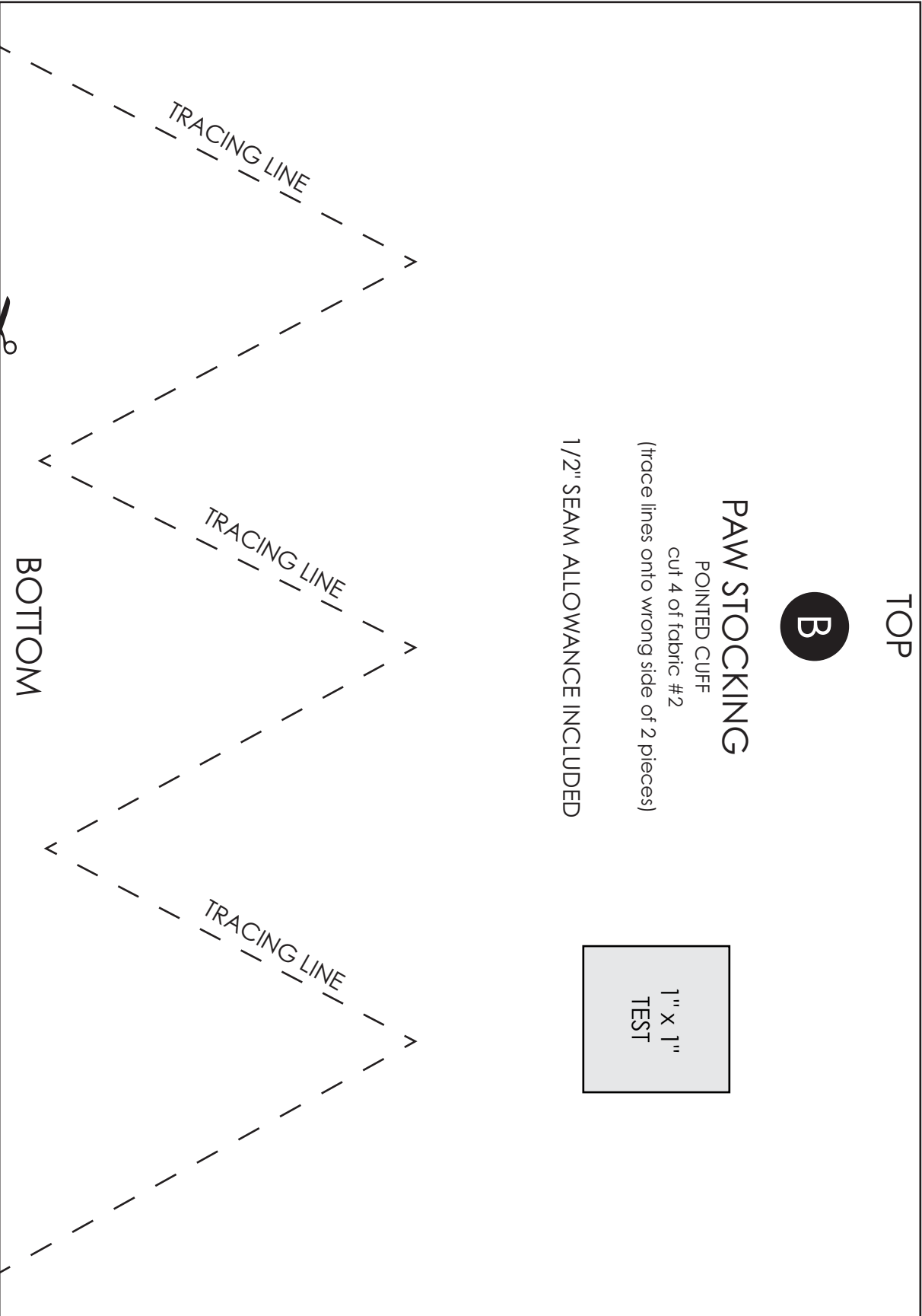
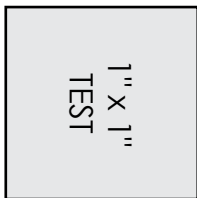
### PAW STOCKING

POINTED CUFF

cut 4 of fabric #2

(trace lines onto wrong side of 2 pieces)

1/2" SEAM ALLOWANCE INCLUDED





**NOTE:**

Print all pattern pieces at 100% (no scaling). Use the "TEST" square below to make sure the sizing is correct.

